



Windows Driver Manual

Rev. 1.1

POS Printer

CONTENTS

1.Manual Information.....	1
2.Operating System(OS) Environment.....	1
3.Windows Driver Preparation.....	2
4.Windows Driver Installation.....	2
5.Detailed Windows Driver Setting.....	6
5.1 Printing Preferences.....	6
5.2 Other Settings.....	13
6.Uninstall Windows Driver.....	15
7.Specification.....	17

1.Manual Information

This Windows Driver Installation Manual provides information on installation, detailed specifications, and usage of the printer's Windows Driver according to PC operating system (OS).

We maintain ongoing efforts to enhance and upgrade the functions and quality of all our products. As follows, product specifications and/or user manual content may be changed without prior notice.

2.Operating System(OS) Environment

The following operating systems are supported for usage.

- Microsoft Windows 10 (32 bit/64 bit)
- Microsoft Windows 8 (32 bit/64 bit)
- Microsoft Windows 7 SPI (32 bit/64 bit)
- Microsoft Windows Vista SP2 (32 bit/64 bit)
- Microsoft Windows XP Professional SP3 (32 bit)
- Microsoft Windows Server 2012(64 bit)
- Microsoft Windows Server 2008 R2
- Microsoft Windows Server 2008 SP2(32 bit/64 bit)
- Microsoft Windows Server 2003 R2 SP2(32 bit/64 bit)

3.Windows Driver Preparation

The Windows Driver is included in the enclosed CD.

The installation file name is HPRT POS Printer Driver-V-X.X.X.X.exe

eg : HPRT POS Printer Driver-v-2.5.3.0.exe

4.Windows Driver Installation



Warning:

Under different operating system, the screen has slight difference. Please operate it according to the tips. Take HRPT TP808 (Windows 7) as example.

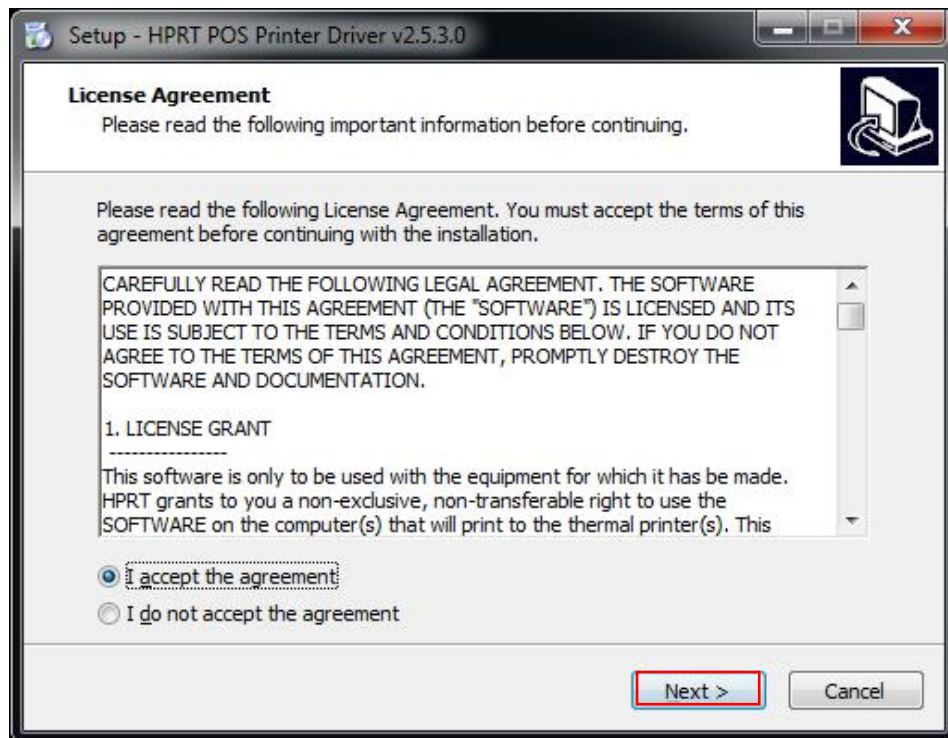


1.Double click Windows Driver.

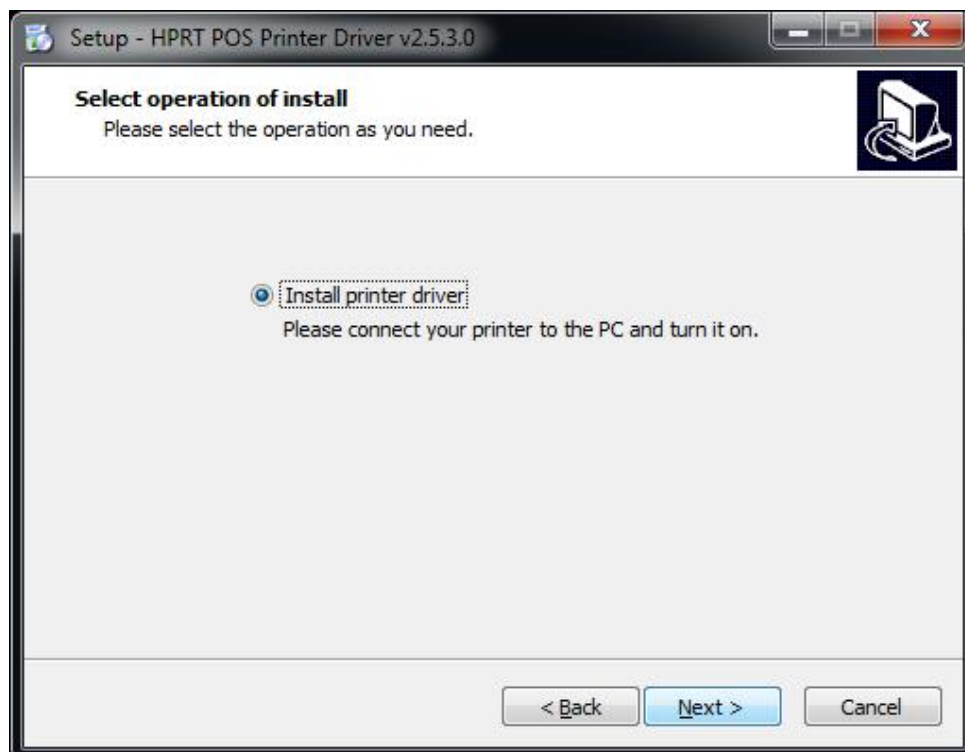
2.Choose “English” and click “OK”.



3.Choose “I accept the agreement”, then click “Next”.

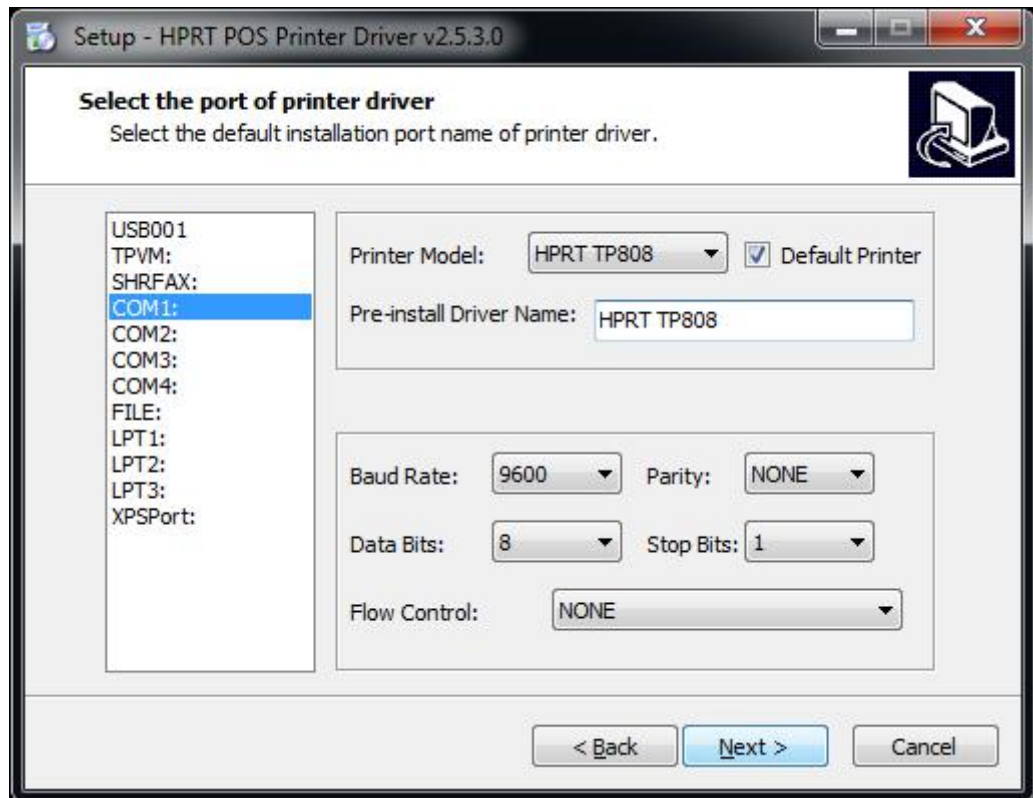


4.Click “Next”

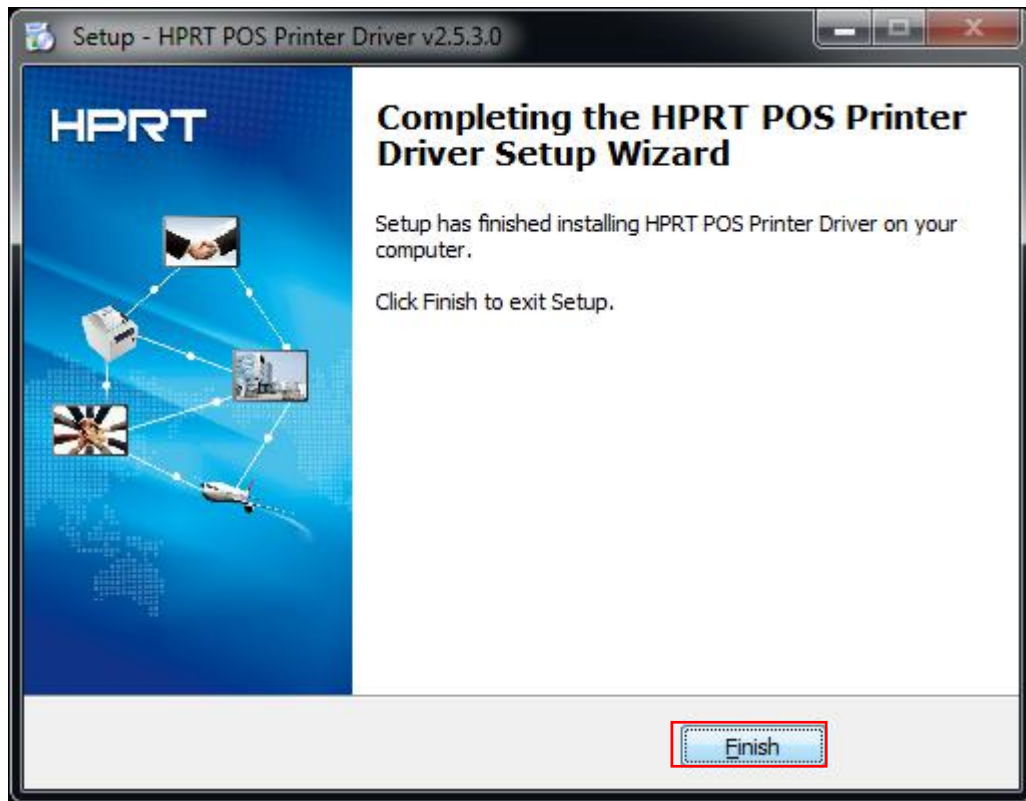


NOTE: If printer is already connected with computer by USB port, it only needs to click “Install”, then it will be installed automatically. Otherwise, proceed to the next step.

5. Choose the matched type and port (USBxxx is for USB port, COMx is for serial port, LPTx is for parallel port). Choose the type and port of driver, such as “COM1” as port. Then click “Next”.



6. Click "Finish". HPRT TP808 printer driver is installed successfully.



7. After installation, the icon will be found in "Start" → "Devices and Printers".

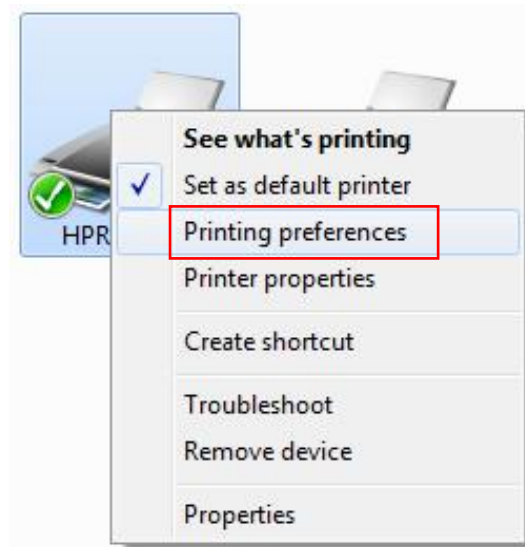


NOTE: If you already installed the driver (No matter what kind of port), when you connect the printer with computer, it will create a USB port automatically.

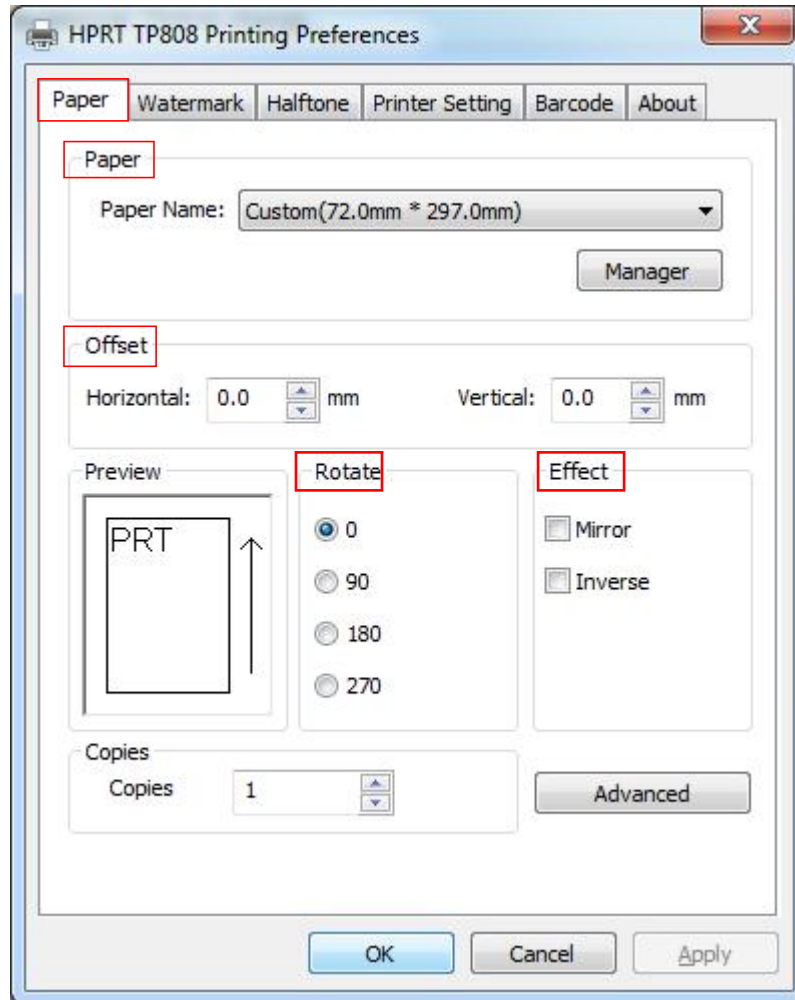
5.Detailed Windows Driver Setting

5.1 Printing Preferences

1.Click "Start"→"Devices and Printers". Right click "HPRT TP808" and choose "Printing preferences".



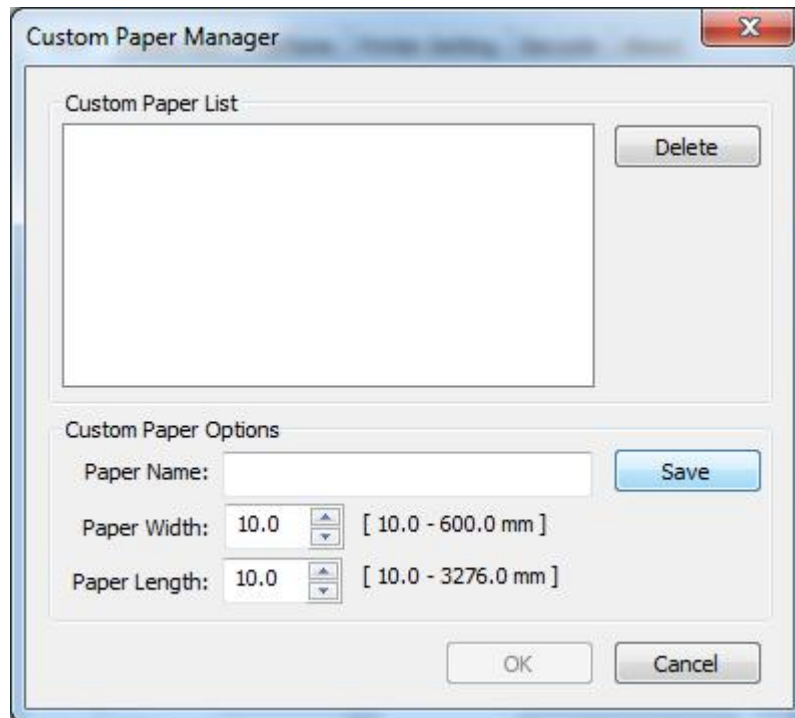
2. According to the different needs, choose “Paper”\“Offset”\“Rotate”\“Effect” in “Paper”.



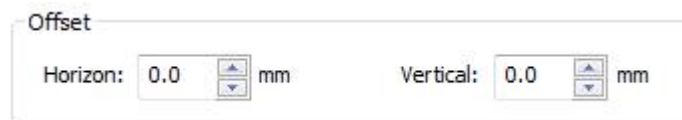
●Click “Paper Name”, choose the specifications of paper.



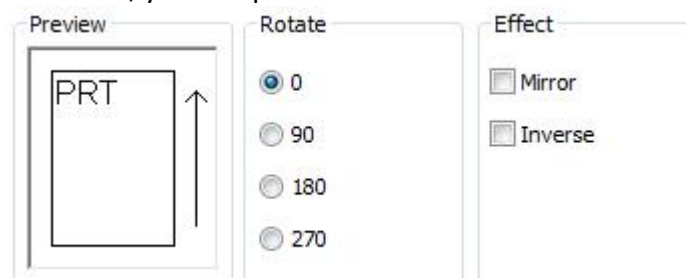
- Click on “Manager”, add or delete paper.



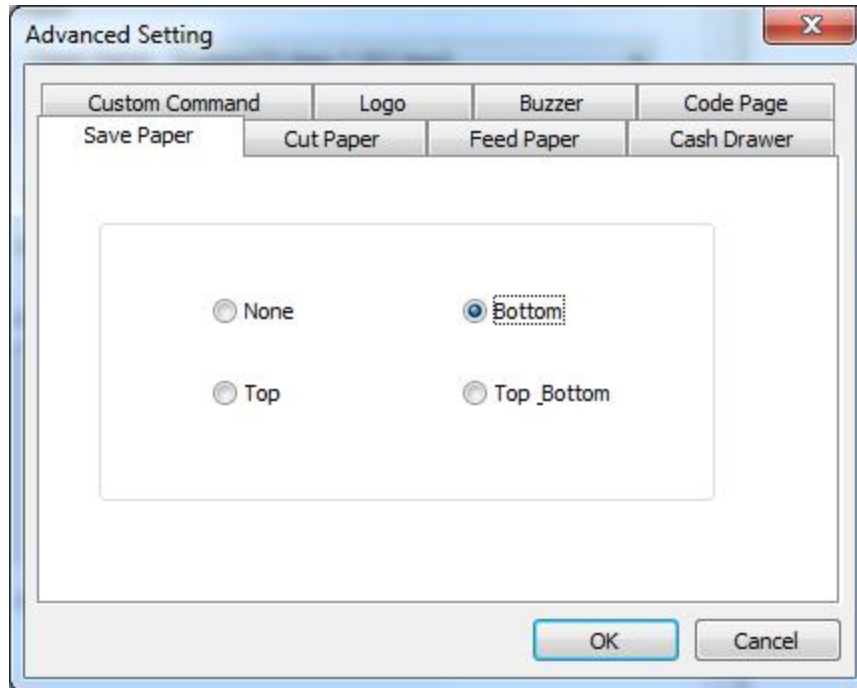
- Choose “Offset”



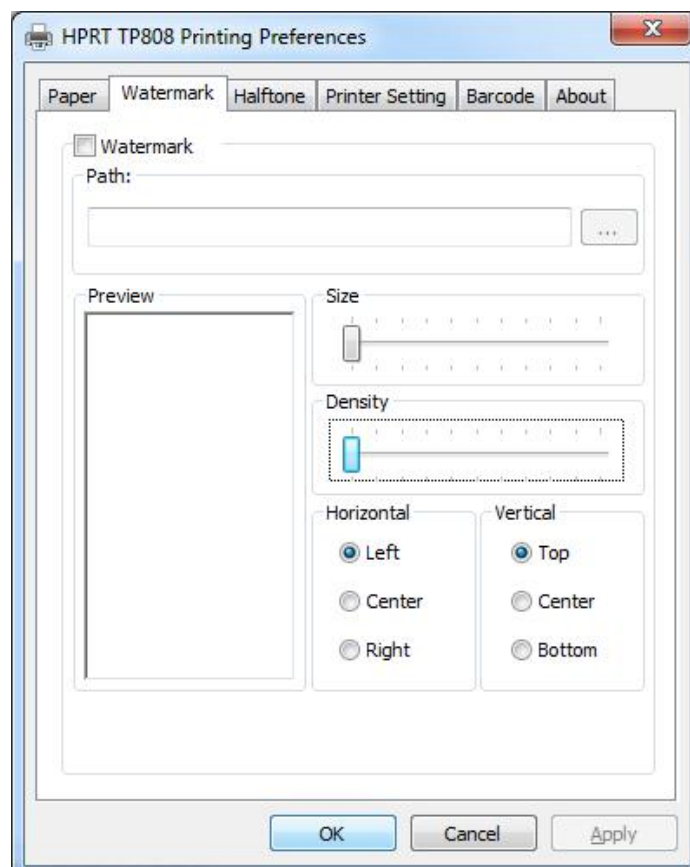
- Choose “Rotate” and “Effect”, you can preview on the left.



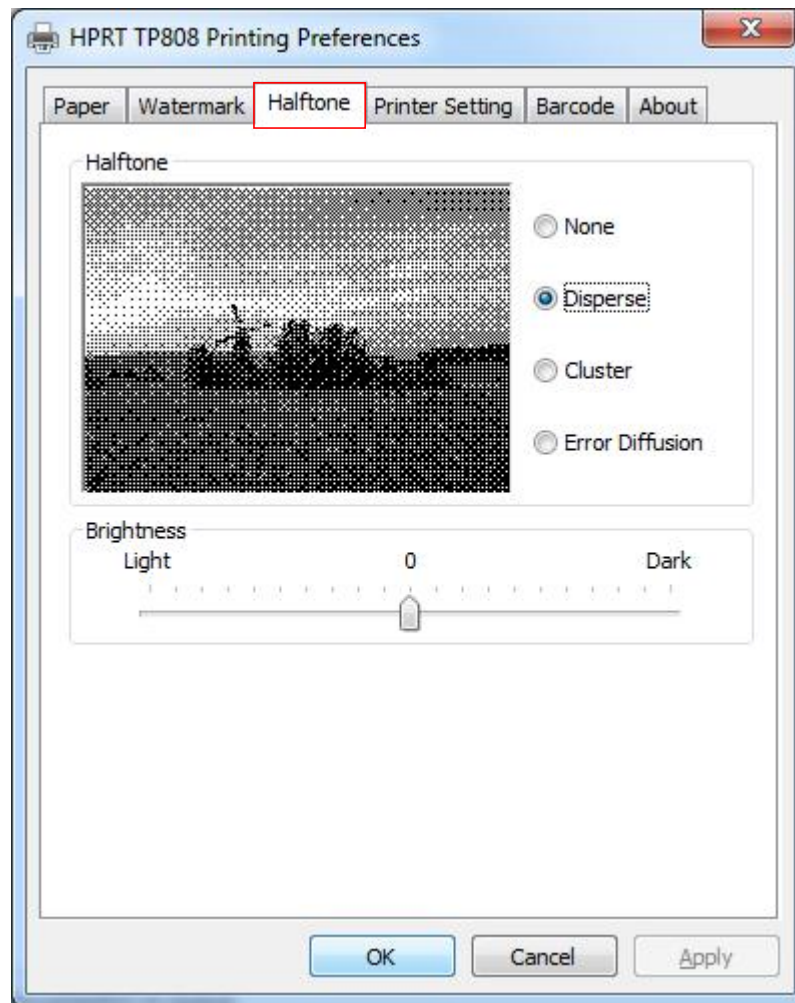
- Click on “Advanced”to set “Custom Command”, “Logo”, “Buzzer”, “Code Page”, “Save Paper”, “Cut Paper”, “Feed Paper”, “Cash Drawer”.



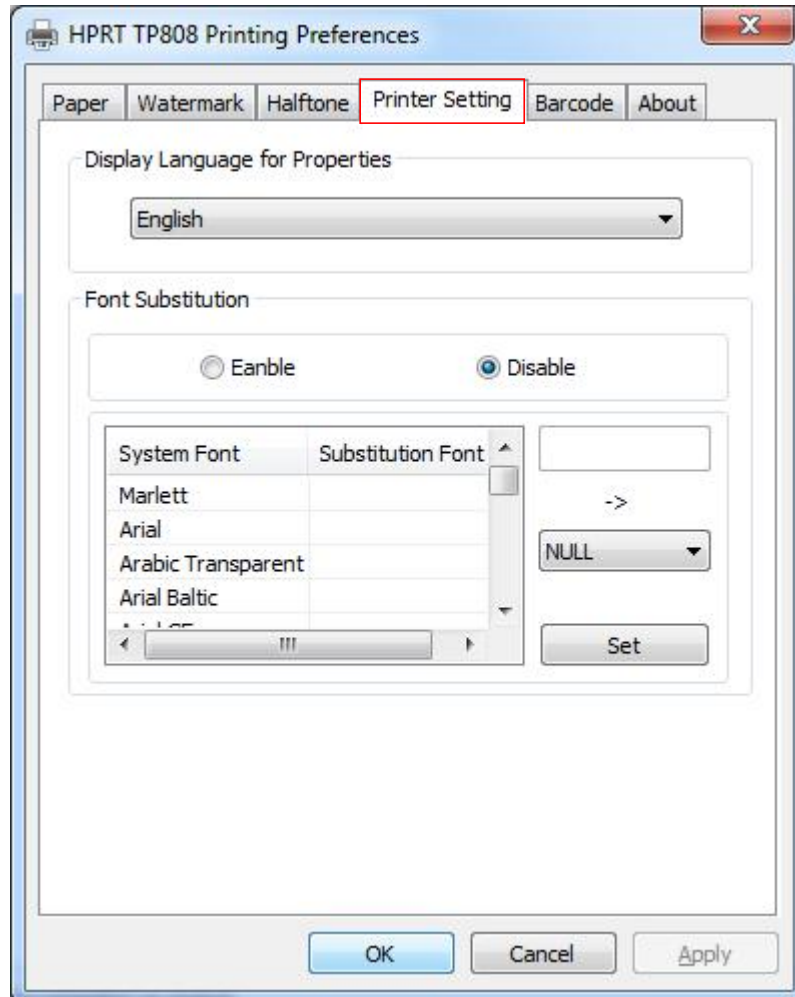
- 3.Click “Watermark”. Set watermark to print.



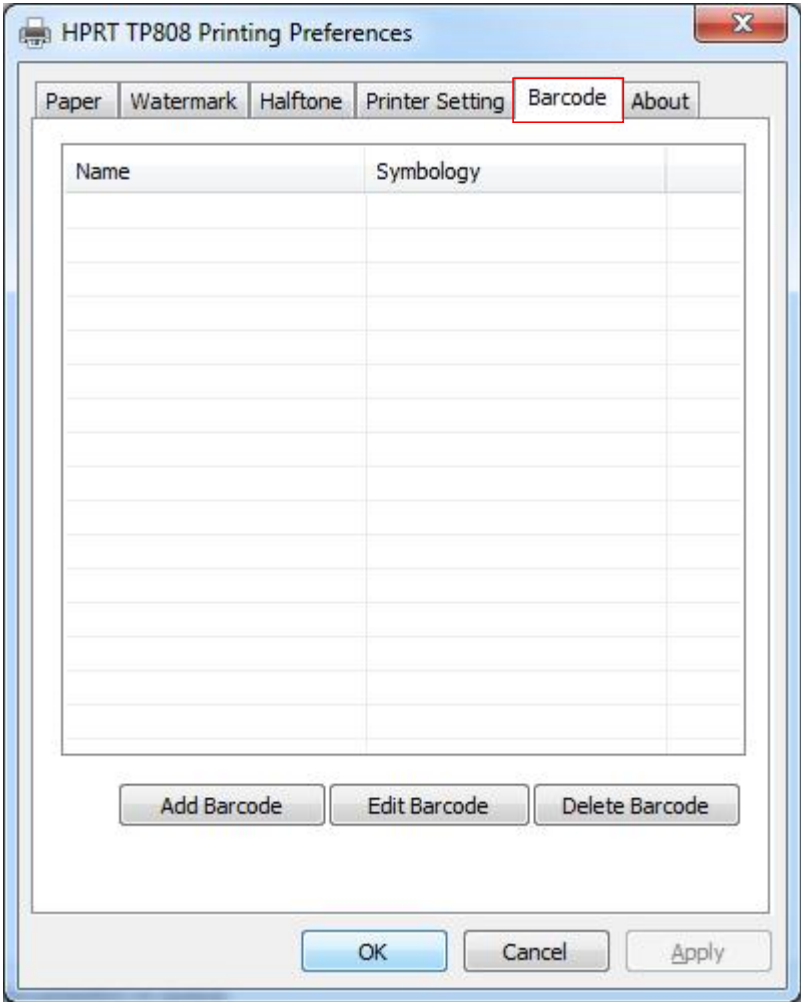
4. Click "Halftone" to set the halftone.



5. Click “Printer Setting” to set “Display Language For Properties” and “Font Substitution”.



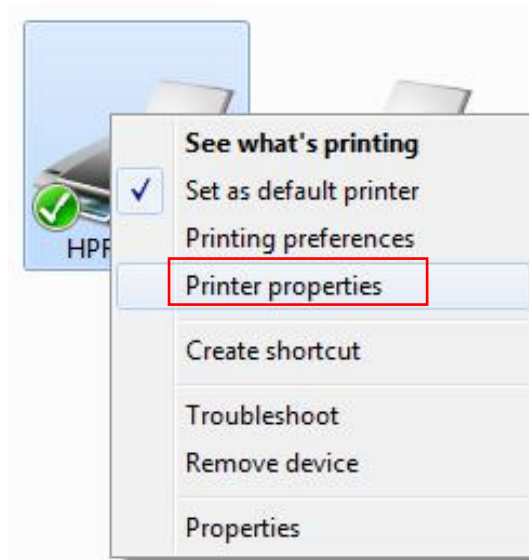
Barcode" button to add/edit/delete barcode.



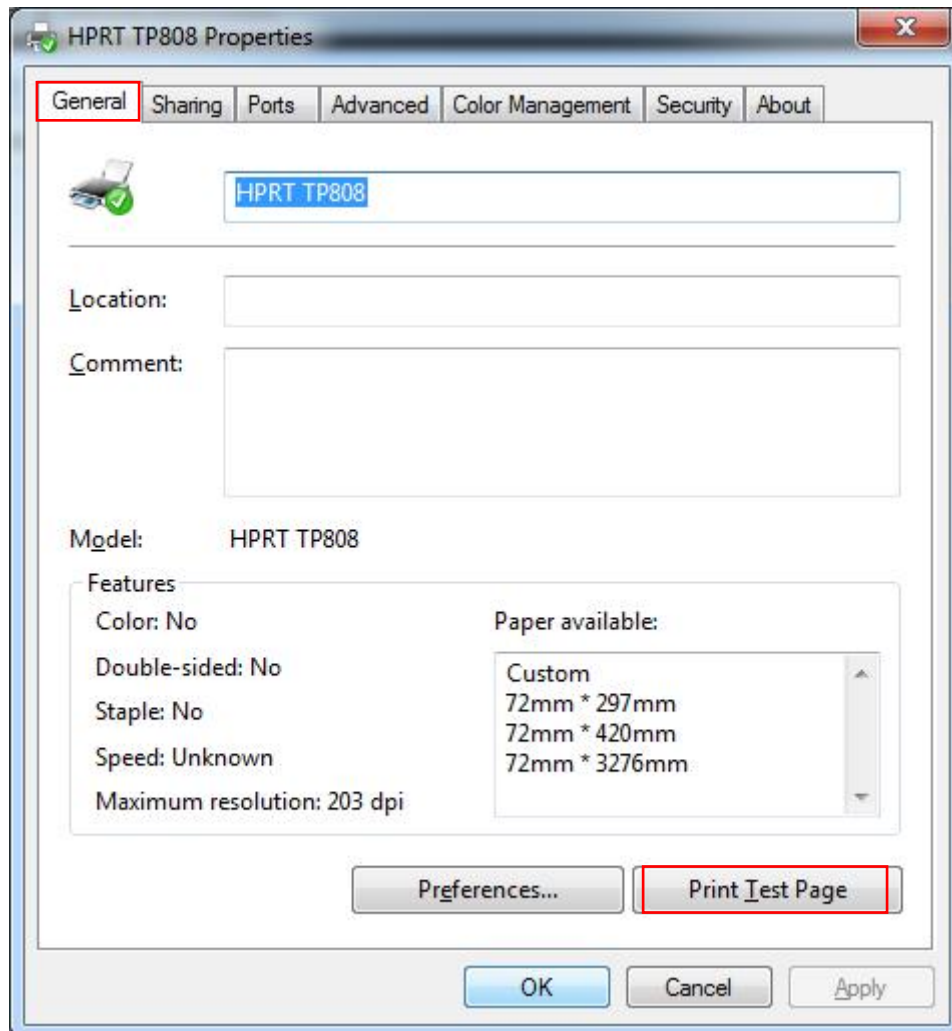
7. After all the setting, click “OK” to save it.

5.2 Other Settings

1. Click "Start" → "Devices and Printers". Right click "HPRT TP808" and choose "Printer properties".



2. Choose "General", click on "Print Test Page", then it will print the current settings.

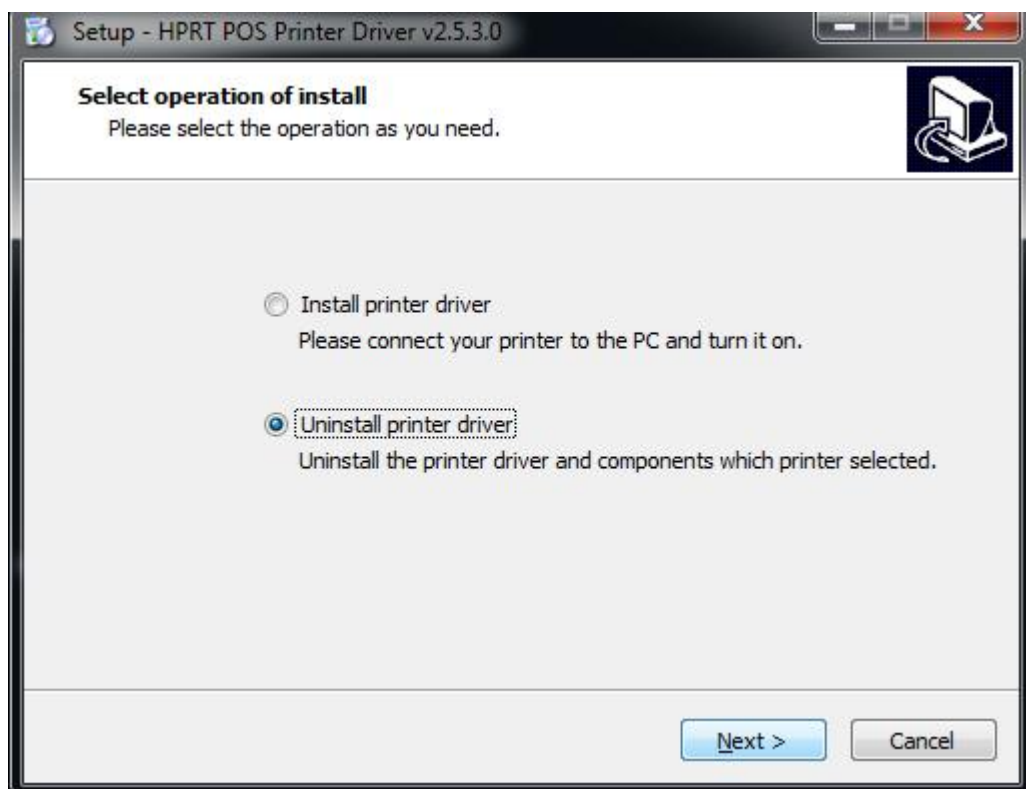


6.Uninstall Windows Driver

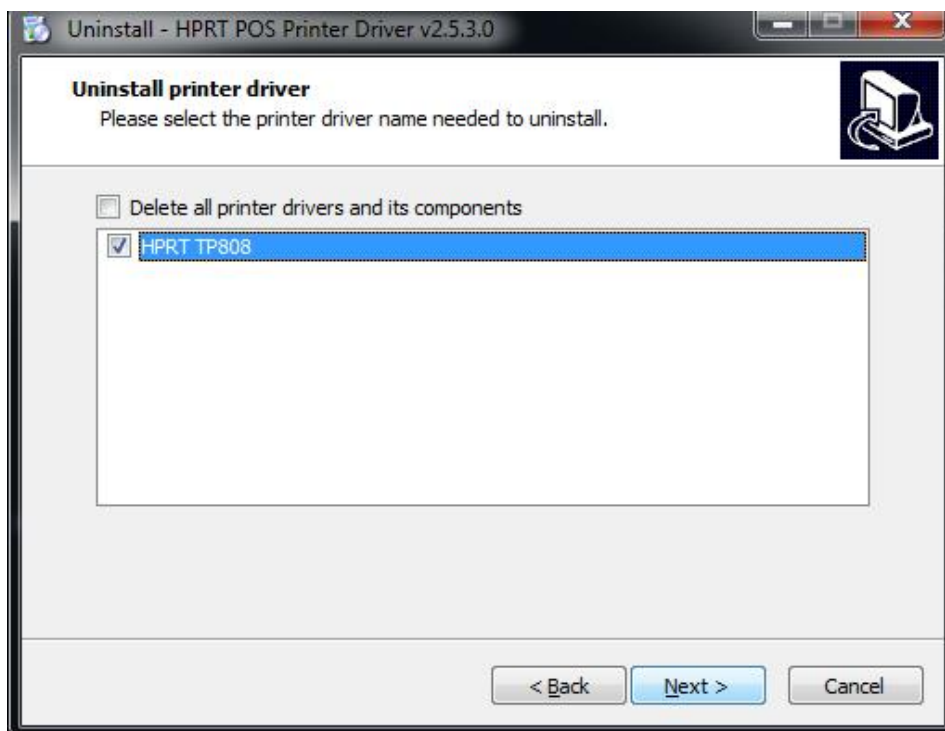
- 1.Double click Windows Driver.
- 2.Choose “English”, then click “OK”.



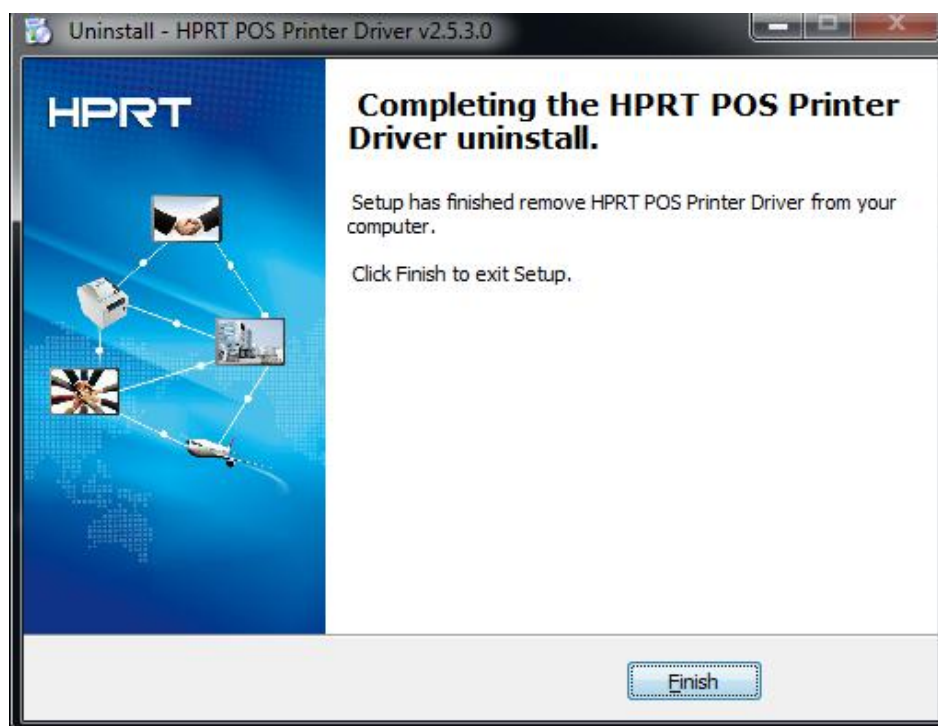
- 3.Choose “Uninstall printer driver”,click “Next”.



4. Choose “HPRT TP808”, click “Next”.



5. Click “Finish”. Then it is complete to uninstall.



7.Specification

Resolution:

HPRT TP808: 203×203dpi

Paper Size:

Custom(72mm * 297mm)

72mm * 420mm

72mm * 3276mm